



CONTAMINATION CONTROL for shoes & wheels

Automotive

Dycem protects cleanrooms & critical environments within the **Automotive industry** across the world.

Our polymeric contamination control mats are proven to attract and retain up to **99.9% of floor-level** and up to **75% of airborne particulates**. When installed at pedestrian and wheeled entrances to a controlled space or cleanroom, the risk of potentially harmful contaminants like dust and static in your critical environment is prevented. Protecting your work, your products, and your people is our top priority!

Supporting Your Industry

with improved contamination control



SUPERIOR PERFORMANCE in attracting, collecting, and retaining particles

CUSTOMIZED SOLUTIONS tailored to meet the needs of each facility and provide optimal results



ESD PREVENTION through static dissipative properties of 10^8 ohms

EASY CLEANING routine incorporated into existing SOP's with minimal downtime



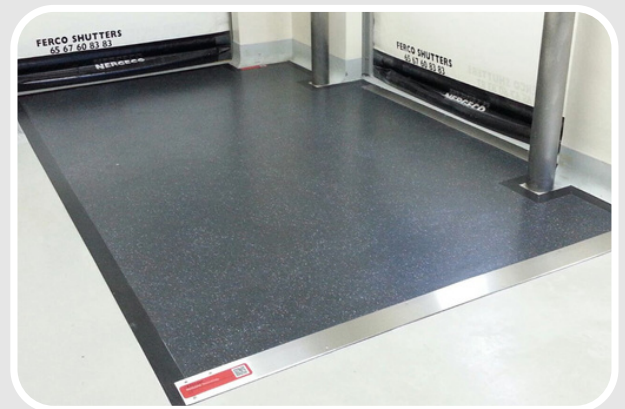
EFFICIENCY by requiring minimal training, processes, or additional time for use

SUSTAINABILITY and significant reduction in plastic waste over a 3+ year lifespan



QUALITY & COMPLIANCE commitment by meeting industry and international standards

up to **99%**
floor level control



OUR PRODUCTS



Dycem® CleanZone

For pedestrian shoes & light wheeled traffic



Dycem® WorkZone

For wheels of heavy carts, pallet jacks, & forklift traffic



WHERE TO USE

- ✓ cGMP controlled areas
- ✓ ESD sensitive areas
- ✓ Entrances to cleanrooms
- ✓ Pedestrian gowning and airshowers
- ✓ Paintshop entrances
- ✓ Material & product transfer areas
- ✓ Component assembly

SUCCESS STORIES IN YOUR INDUSTRY

“

“Dycem high performance contamination control zones are great at trapping contamination and helping to clean up various areas in the paint department, preventing contamination from affecting the paint finish.”

-Ford Motor Company



“

“Dycem is the most cost effective means of controlling contamination at floor level & preventing contamination from getting into critical development work.”

-Honda

