

PRODUCT INFORMATION SHEET

Dycem® WorkZone

The SUPERIOR solution for wheels – Dycem® WorkZone mats are crafted from specialty polymeric compounds to withstand heavy loads for up to 99.9% prevention of floor-level contamination.

WorkZone mats have a naturally tacky and reusable polymeric surface suitable for heavy-wheeled traffic flows. WorkZone mats have been scientifically proven to **prevent up to 99.9% of floor-level contamination, and up to 75% of airborne contamination** from entering controlled environments. This long-term solution serves as a significant improvement to less effective and time-consuming manual methods of decontamination for heavy-wheeled traffic.

KEY BENEFITS



INSTALLED & CUSTOMIZED FOR YOUR FACILITY'S NEEDS

Custom size, shape, color & visual options available to achieve optimal contamination control as well as company specific branding & communication. Installed and sealed to the subfloor by trained technicians and tested annually for efficiency.



EFFECTIVE & EFFICIENT FLOOR-LEVEL CONTAMINATION CONTROL

Because of WorkZone's unique weight capacity and low-profile edging, wheels travel smoothly over the mat even in an environment with frequent and heavy loads, providing superior control with minimal downtime.

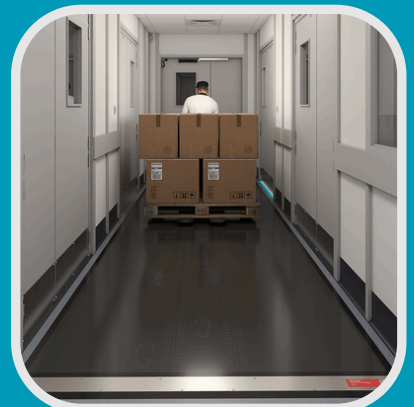
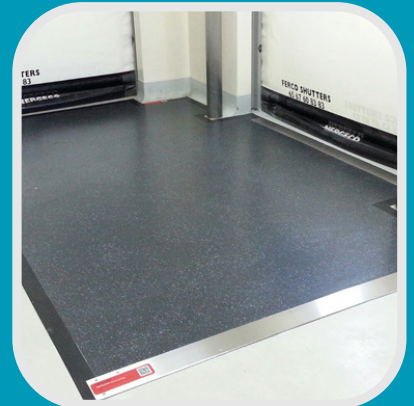


LONG-TERM SOLUTION & SUSTAINABLE ALTERNATIVE

WorkZone mats are cleaned daily or per shift and have an average installed lifespan of 3+ years. No daily disposable waste is required and water usage from specialized cleaning in controlled areas is reduced.

WHERE TO USE:

- ✓ Goods-in & material entrances and exits to controlled areas
- ✓ Inside airlocks (MALs), and product transfer areas
- ✓ In hallways or between different product lines or processes
- ✓ Layered between ISO levels or hygiene zones

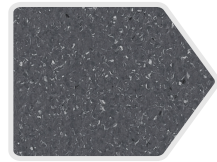


COLOR OPTIONS



Charcoal

*Solid colors help to
HIGHLIGHT contamination



Granite

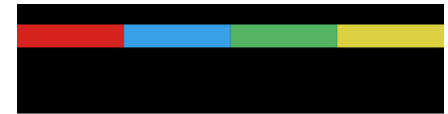
*Speckled colors help to
MASK contamination

EDGING SYSTEMS



Inlay Edging

3 15/16" (100mm) wide,
diminishing edge



Red

Blue

Green

Yellow

Black Edging

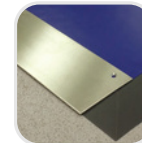
2 9/16" (65mm) wide,
diminishing edge



Black

Metal Edging

3 15/16" (100mm) wide,
diminishing edge



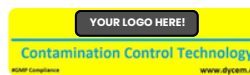
Stainless Steel

VISUAL COMMUNICATIONS



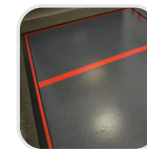
Floor Graphics

*customization available



Edging Labels

*customization available



Color Coding & Demarcation Lines

WORKZONE: TECHNICAL FEATURES

- ✓ **SIZE:**
Height/Thickness - 1/8" (2.1mm)
Standard Width - 4' or 6.5' (1.2mt or 2.0mt)
Length - Custom, can be seamed as needed

- ✓ **WEIGHT:**
Nominal 0.48 lb/ft² (2.4 kg/m²)

- ✓ **ANTIMICROBIAL:**
Polygiene BioMaster silver ion additive incorporated during manufacturing, 24/7 protection against common microorganisms

- ✓ **CLEANING REQUIREMENTS:**
Wet mopped or sprayed with approved cleaning agent, agitation to lift the residue, and squeegee dried.



Cleaning Tutorial

Caution - slippery when wet!

- ✓ **PARTICLE COLLECTION:**
Proprietary polymeric blend with natural tack, optically smooth surface creates short range electromagnetic pull (van der Waals)

- ✓ **SURFACE RESISTIVITY:**
10⁸ ohms (tested to ASTM F150, DIN 51953, BS 2050)

- ✓ **CO-EFFICIENT OF FRICTION:**
≥ 0.30 in accordance with EN 13893 - Technical class DS

- ✓ **LOAD RESISTANCE:**
1280 lb/in² (90 kg/cm²)

- ✓ **COMPLIANCE:**



- ✓ **PRODUCT WARRANTY:**
1 year, restrictions apply, see warranty statement

- ✓ **TOXICITY:**
Non-toxic, silicon, latex and melamine-free, no known adverse skin reactions

- ✓ **OUTGASSING:**
Requirements met for ISO 16000-3, ISO 16000-6, ISO 16000-9 and ISO 16000-11

- ✓ **UV & HEAT RESISTANCE:**
Working range 32°-122°F (0-50° C).
Constant exposure to light will degrade surface.

- ✓ **FLAMMABILITY:**
EflS1 EN 14041:2004